

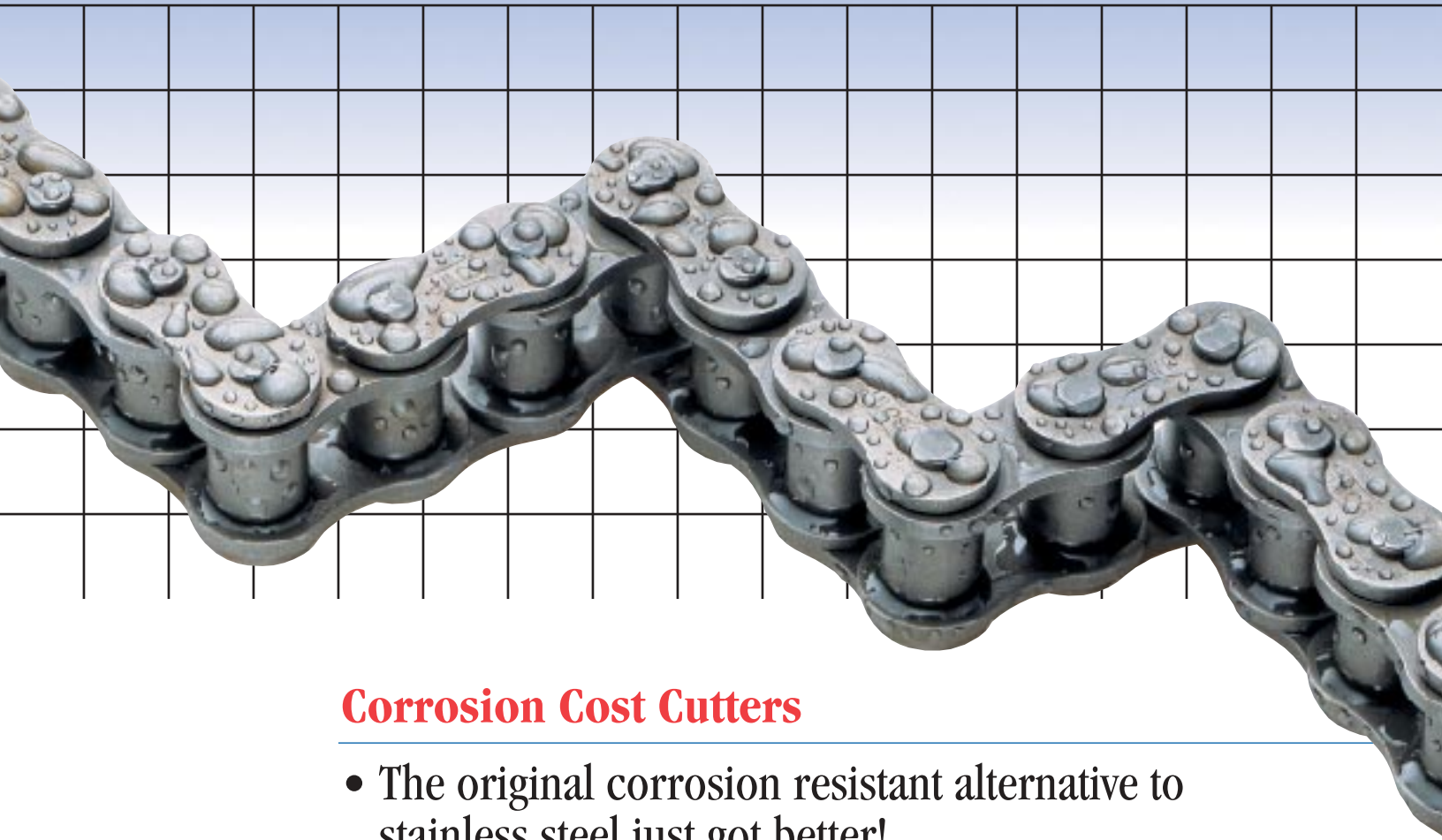


# U.S. Tsubaki, Inc.

Roller Chain Division

Improved!  
Stop corrosion  
**BEFORE**  
it eats away  
your profits!

## ULTRA WP™ Chains & Sprockets



### Corrosion Cost Cutters

- The original corrosion resistant alternative to stainless steel just got better!
- You just can't find a more cost-efficient chain and sprocket system than ULTRA WP!

# ULTRA WP™ Chains and Sprockets

ULTRA WP was the first cost-effective corrosion resistant alternative to both stainless steel and nickel-plated chain. Because of our overwhelming success, other companies developed their own versions of our popular chain, but these copycats just don't measure up. They may **claim** to deliver corrosion resistant performance, but when exposed to salt fog spray, it is proven that the competition offers watered-down results.

You just can't buy a more corrosion resistant chain than ULTRA WP.

And that's not all!

**ONLY** ULTRA WP is available as an **entire** corrosion resistant system: from roller chain to engineering chain to sprockets.

Ultra WP™

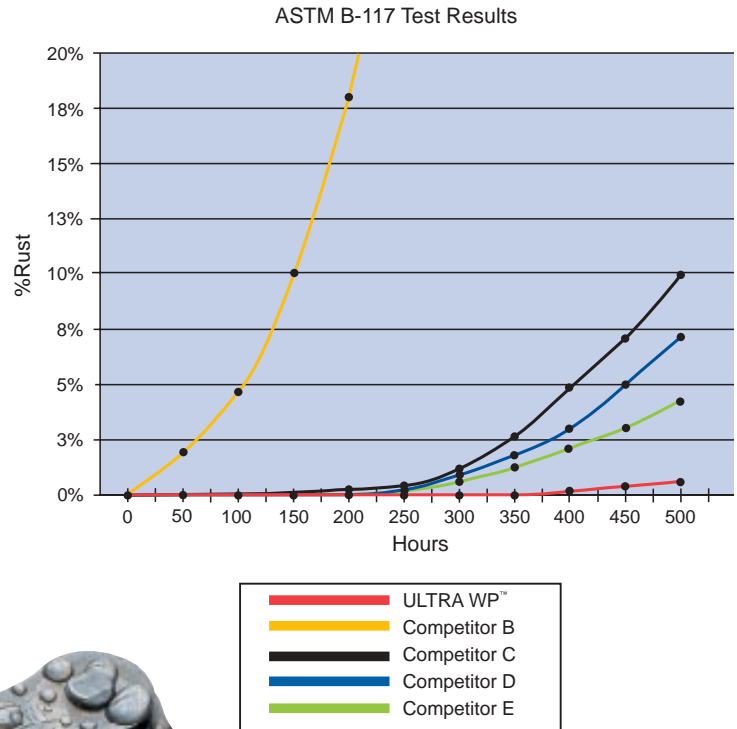


## Salt Spray Testing

**Tests:** To evaluate in-service usage, ULTRA WP™ Chain and a number of competitors' coated chains were exposed to a salt fog spray for 500 hours (per ASTM B-117). The results show ULTRA WP provided strong, long-lasting protection even in this challenging environment.

**Results:** Corrosion eats up chain — and profits. Appearance of **red rust** means the integrity of the coating has been violated: the base metal is under corrosion attack and is at risk of failure. That can have serious consequences. Line breaks and unscheduled downtime come right off your bottom line.

Choose ULTRA WP Chains and Sprockets to defy corrosion and protect your profits. Remember: watered-down copycats just don't measure up.



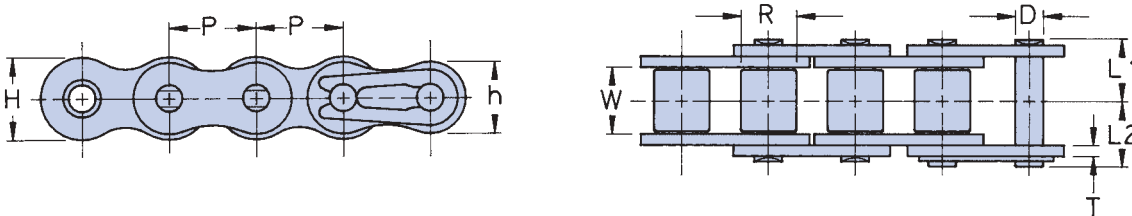
# ULTRA WP™ CHAIN

## DRIVE CHAIN

All dimensions in inches unless otherwise indicated.

Chain Number	Pitch P	Width Between Roller Link Plates W	Roller Diameter R	Link Plate			L1	Pin		Average Tensile Strength (lbs.)	Max. Allowable Load (lbs.)	Approx. Weight (lbs./ft.)
				T	H	h		L2	D			
RS40WP	.500	.312	.312	.060	.472	.409	.325	.392	.156	4,290	810	.43
RS50WP	.625	.375	.400	.080	.591	.512	.406	.472	.200	7,050	1,430	.70
RS60WP	.750	.500	.469	.094	.713	.614	.506	.581	.234	9,920	1,980	1.03
RS80WP	1.000	.625	.625	.125	.949	.819	.640	.758	.312	17,640	3,300	1.79
RS100WP	1.250	.750	.750	.156	1.185	1.024	.778	.900	.375	26,460	5,070	2.68

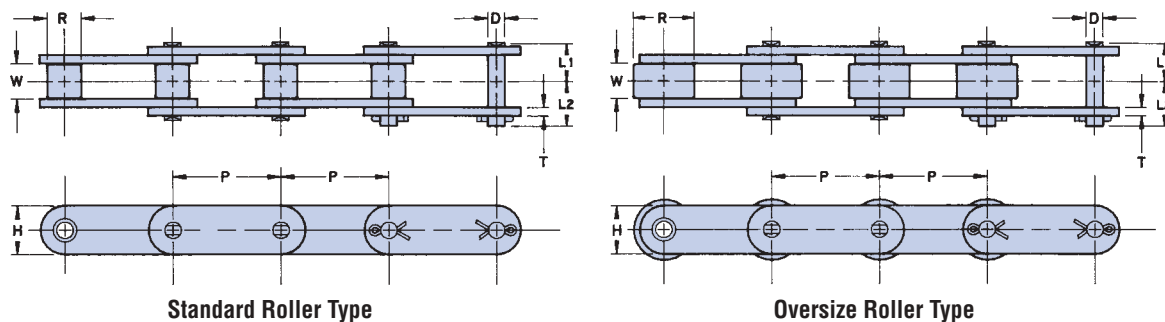
RS40WP - RS60WP are provided with clip-type connecting links. RS80WP and RS100WP are cottered type. All other links are riveted.



## DOUBLE PITCH CONVEYOR CHAIN

Chain Number	Pitch P	Width Between Roller Link Plates W	Roller Diameter R	Pin			Plate		Average Tensile Strength (lbs.)	Max. Allowable Load (lbs.)	Approx. Weight (lbs./ft.)
				L1	L2	D	H	T			
C2040WP	1.000	.312	.312	.325	.380	.156	.472	.060	3,740	590	.34
C2050WP	1.250	.375	.400	.406	.469	.200	.591	.080	6,170	970	.56
C2060WP	1.500	.500	.469	.575	.646	.234	.677	.125	9,040	1,410	1.01
C2080WP	2.000	.625	.625	.720	.823	.312	.906	.156	15,430	2,400	1.78
C2042WP	1.000	.312	.625	.325	.380	.156	.472	.060	3,740	590	.58
C2052WP	1.250	.375	.750	.406	.469	.200	.591	.080	6,170	970	.87
C2062WP	1.500	.500	.875	.575	.646	.234	.677	.125	9,040	1,410	1.47
C2082WP	2.000	.625	1.125	.720	.823	.312	.906	.156	15,430	2,400	2.47

C2040WP - C2060WP and C2042WP - C2062WP are provided with clip-type connecting links. C2080WP and C2082WP are cottered type. All other links are riveted.



Standard Roller Type

Oversize Roller Type

# Select the Right Chain for Your Application

Chain Style	High → Lower 10 → 1		Excellent → No Resistance 10 → 1	
	Tensile Strength	Max. Allowable Working Load	Corrosion Resistance Water	5% Salt Water
<b>ULTRA WP™ Chain</b>	<b>10</b>	<b>10</b>	<b>7</b>	<b>7</b>
Nickel-Plated	9	8	4	3
Carbon Steel	10	10	2	1
Stainless Steel	6	2	10	10

## Attachments

Selecting the proper chain for your corrosive environment is critical to maximize chain life and performance. ULTRA WP™ Chain is the Corrosion Cost Cutter.

A wide range of attachments are available for ULTRA WP™ Chain on a made-to-order basis. The selection procedure is identical to standard roller chain. Refer to the U.S. Tsubaki General Catalog (L10940) for ordering guidelines or contact your local U.S. Tsubaki Service Center.

In certain applications, such as the food products industry where the chain may be exposed to direct contact with food, stainless steel chain is suggested.

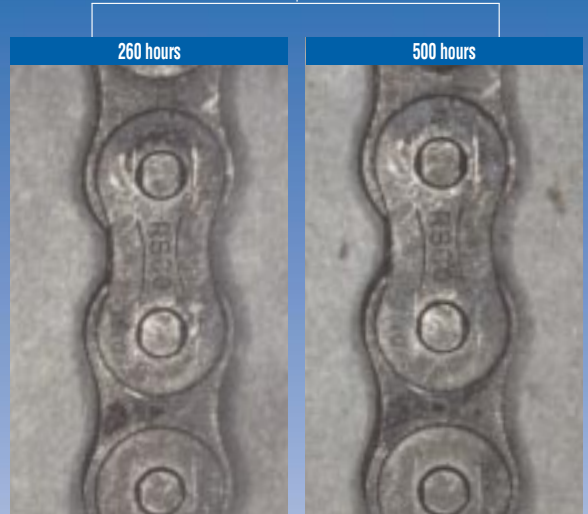


# Don't be Misled by Watered-Down Competitors

	Percentage of Red Rust	At 260 hours	At 500 hours
<b>A</b>	<b>ULTRA WP™</b>	<b>0</b>	<b>&lt; 1%</b>
<b>B</b>	Competitor	20%	> 50%
<b>C</b>	Competitor	3%	> 10%
<b>D</b>	Competitor	2%	7%
<b>E</b>	Competitor	1%	5%

ULTRA WP™ Chain

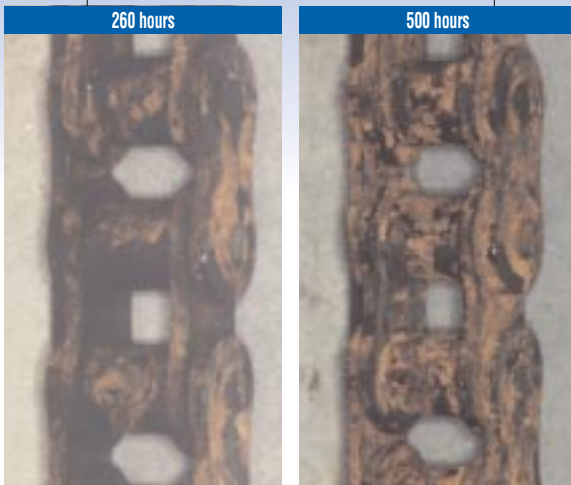
**A**



Competitor

**B**

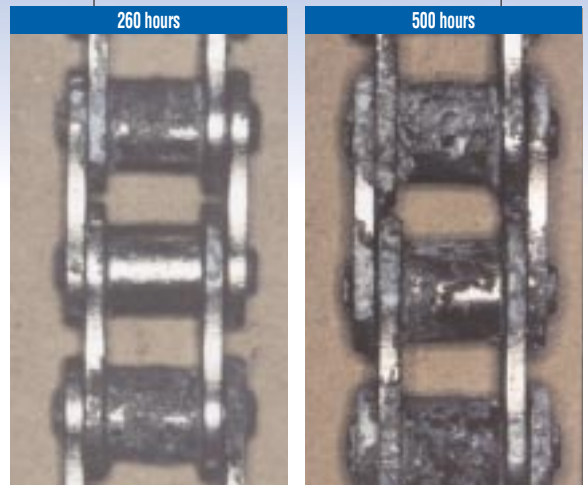
Rust attacks the side plates of the chain.



Competitor

**C**

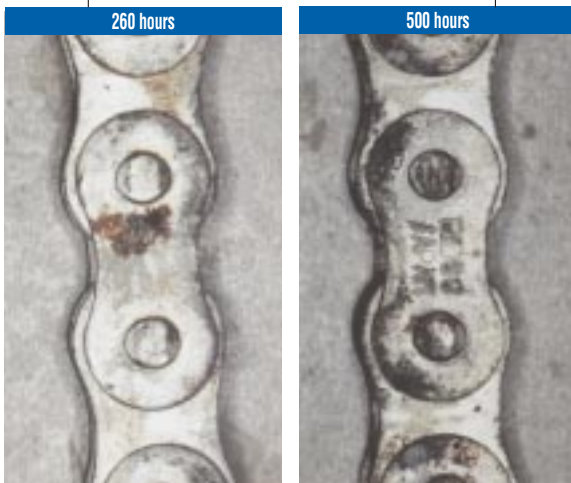
Rust interferes with the chain-sprocket articulation.



Competitor

**D**

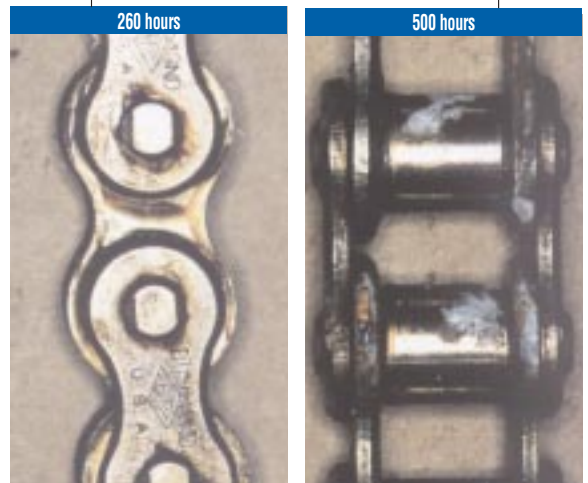
Rust weakens plates and rollers.



Competitor

**E**

Rust compromises the integrity of the chain.



# ULTRA WP™ Chains and Sprockets

## Corrosion Cost Cutters

Drive Chains

Conveyor Chains

Engineering Class Chains

Sprockets

Combining the proven strength of carbon steel with superior corrosion resistance, ULTRA WP delivers significantly extended service life for reduced total operating costs. And ONLY ULTRA WP offers a complete corrosion resistant package that includes **roller chain, engineering chain, and sprockets.**

If your drive or conveyor chains are exposed to intermittent water, occasional washdowns, outdoor conditions, even chemicals and salt water, you need ULTRA WP Chains and Sprockets to keep your lines moving.

The advanced performance of ULTRA WP is the result of a revolutionary mechanical plating system treatment that forms a

lasting bond to carbon steel. The coating won't flake. It won't peel off. It won't contaminate your valuable processing lines. It protects the chain and extends the service life by resisting corrosion longer than ever before.

ULTRA WP stands up to water better than other types of plated chain. In field tests, ULTRA WP Chain lasted longer than standard, nickel-plated, zinc-plated, and other copycat corrosion-resistant chains before rust was evident.

Corrosion eats up more than chain — it eats up your profits! Choose strong, long-lasting ULTRA WP and protect your bottom line.



# ULTRA WP™

- Saves money by reducing operating costs and downtime
- Available in drive chains, conveyor chains, engineering class chains, and sprockets
- Unique mechanical plating system won't flake or peel off
- High tensile strength and impact resistance of carbon steel chain
- Longer corrosion resistance than standard, nickel-plated, zinc-plated, and even copycat coated chains
- Stands up to intermittent water exposure — from noncaustic indoor washdowns to outdoor elements, even saltwater!

## Your Special Requirements Can Be Met

ULTRA WP™ is available in Engineering Class to give you corrosion resistant heavy-duty chains.

ULTRA WP™ LAMBDA® is corrosion resistant chain that does not require lubrication. This combination chain is ideal for lube-free equipment that is exposed to moisture or high humidity.



# ULTRA WP™ Chain

## A Carbon Steel Chain that RESISTS Corrosion!



### U.S. TSUBAKI, INC.

#### HEADQUARTERS

301 E. MARQUARDT DRIVE

WHEELING, IL 60090

TEL: (800) 323-7790

TEL: (847) 459-9500

FAX: (847) 459-9515

WEB SITE: [www.ustsubaki.com](http://www.ustsubaki.com)

### Service Centers

#### Atlanta, GA

##### U.S. Tsubaki, Inc.

675 Wesleyan Drive, S.W.

Atlanta, GA 30336

Tel: (800) 443-8212

Tel: (404) 349-7973

Fax: (404) 349-7975

#### Charlotte, NC

##### B.C. & H. Company

11010 Monroe Road

Matthews, NC 28105

Tel: (704) 847-9131

Fax: (704) 847-3651

#### Chicago, IL

##### U.S. Tsubaki, Inc.

301 E. Marquardt Drive

Wheeling, IL 60090

Tel: (800) 323-7790

Tel: (847) 459-9500

Fax: (847) 459-9515

#### Dallas, TX

##### Robco, Inc.

1523 Crescent Drive

Carrollton, TX 75006

Tel: (972) 242-3300

Fax: (972) 245-2328

#### Los Angeles, CA

##### U.S. Tsubaki, Inc.

18031 Cortney Court

City of Industry, CA 91748

Tel: (800) 352-4315

Tel: (626) 913-1344

Fax: (626) 913-5042

#### Philadelphia, PA

##### U.S. Tsubaki, Inc.

2321 N. Penn Road

Hatfield, PA 19440

Tel: (800) 258-3847

Tel: (215) 997-9170

Fax: (215) 997-9179

#### Portland, OR

##### U.S. Tsubaki, Inc.

14157 N.E. Airport Way

Portland, OR 97230

Tel: (800) 352-4315

Fax: (626) 913-5042

### Manufacturing Facilities

#### Bennington, VT

##### U.S. Tsubaki, Inc.

119 Bowen Road

Bennington, VT 05201

Tel: (800) 451-4441

Tel: (802) 447-7561

Fax: (802) 447-0755

#### Holyoke, MA

##### U.S. Tsubaki, Inc.

821 Main Street

Holyoke, MA 01040

Tel: (800) 628-9037

Tel: (413) 536-1576

Fax: (413) 534-8239

#### Sandusky, OH

##### U.S. Tsubaki, Inc.

1010 Edgewater Drive

Sandusky, OH 44870

Tel: (800) 537-6140

Tel: (419) 626-4560

Fax: (419) 626-5194

#### Tsubaki of Canada Limited.

1630 Drew Road,

Mississauga

Ontario, Canada L5S 1J6

Tel: (800) 263-7088

Tel: (905) 676-0400

Fax: (905) 676-0904

### Distributed by:

NOTE: IN ACCORDANCE WITH THE POLICY OF U.S. TSUBAKI, INC., TO CONSISTENTLY IMPROVE ITS PRODUCTS, THE SPECIFICATIONS IN THIS BROCHURE ARE SUBJECT TO CHANGE WITHOUT NOTICE. **FOR CURRENT TERMS AND CONDITIONS OF SALE, SEE OUR CURRENT PRICE LIST.**

